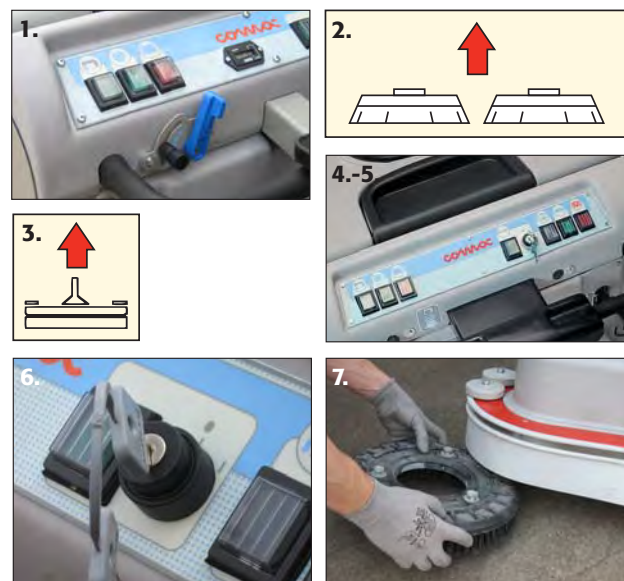




Principle maintenance rules

Omnia 26/28/32/42

AT THE END OF THE WORK

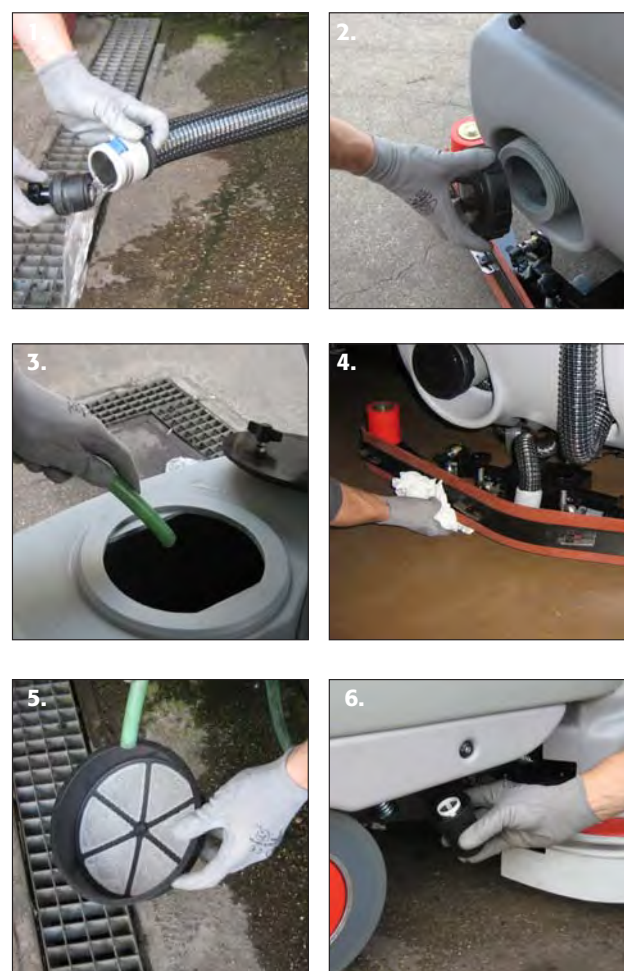


1. Close the water tap
2. Lift the brushes
3. Lift the squeegee
4. Turn off the brush motor switch
5. Turn off the suction motor switch
6. Turn the key to the OFF position
7. Check the wear of the brushes or discs
(to be replaced before the pad holder is being damaged)



Do not vacuum flammable products such as: alcohol, spirits, trichloroethylene, solvents, etc.

DAILY MAINTENANCE



1. **Cleaning the recovery tank**
Empty the tank using the hose, turning the knob a couple of times to loosen it and then removing the cap
2. **Periodically or in case of heavy dirt, use the rear hatch**
3. **Cleaning the recovery tank**
Lift the clean water tank.
Make sure it is empty.
Open the recovery tank lid and clean the tank with a water jet. Close the cap of the discharge hose and replace it on the machine
4. **Cleaning the squeegee**
Clean the squeegee with a jet of water and clean the lower part by hand
- 5.-6. **Cleaning the solution tank filters**
With the solution tank **empty**:
 1. Unscrew the lid and remove the mesh filter, rinse with water and screw it again
 2. Unscrew the cartridge filter
 3. Remove and clean the cartridge
 4. Open the tap
 5. Rinse the tank with a water jet
 6. Reassemble everything, repeating the above-mentioned operations in the reverse order

WEEKLY MAINTENANCE

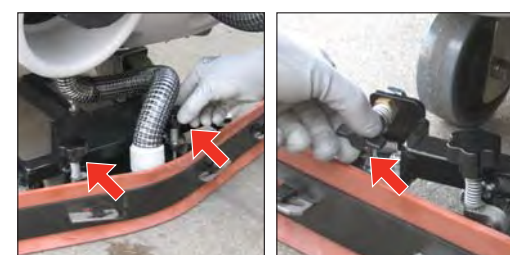


1. **Rear squeegee rubber**
(if worn, change the dryer side; replace after all sides are worn)
- 2.-3. **Cleaning the suction motor filter**
Extract the suction motor filter and clean it with a jet of water.



You should always wear protective gloves to avoid the risk of serious injury to hands

ADJUSTING THE SQUEEGEE



1. Adjust the wheel on the support so that the rubber is not too squashed to the ground, and the squeegee rests evenly on the ground
2. Adjust the inclination using the knob, so that the rubber has on the floor a uniform inclination in both sides and in the centre

LEAD BATTERY MANAGEMENT (TRACTION USE)



- The filling up must always be carried out after the battery charging (and before use)
- The filling up should be performed when necessary (i.e. when the electrolyte level drops below 15 mm above the line of the plaques)
- Never let the battery drop below 80% of the rated capacity
- While charging, the lid of the body must be lifted, but the caps must remain closed
- Never perform partial charging: the charging cycle must be finished